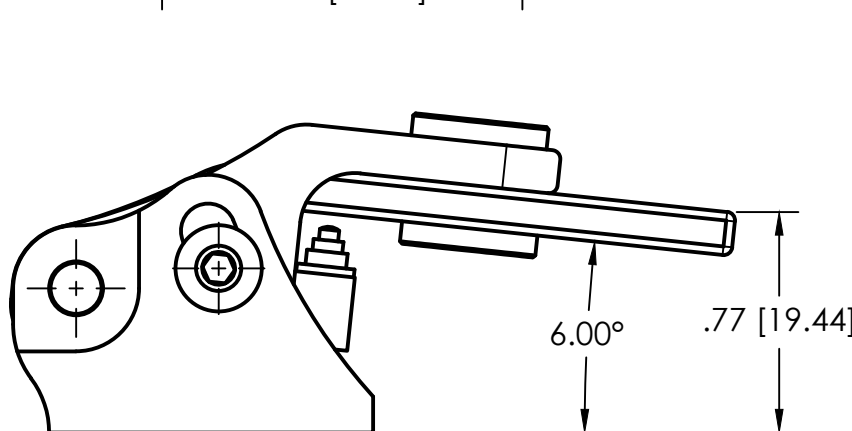
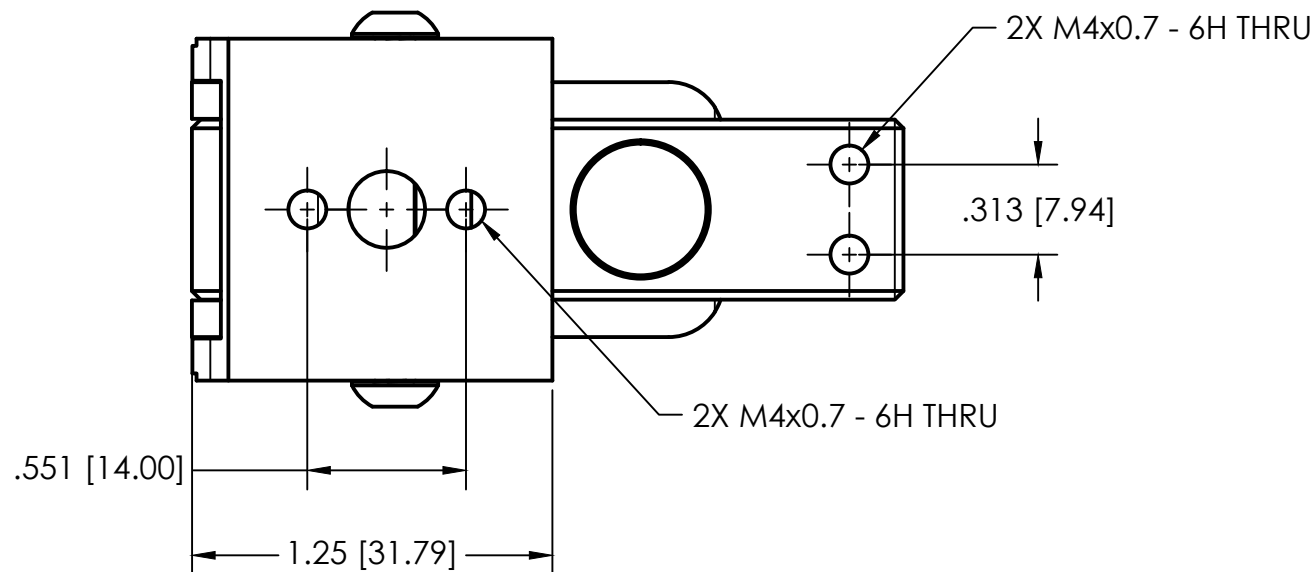
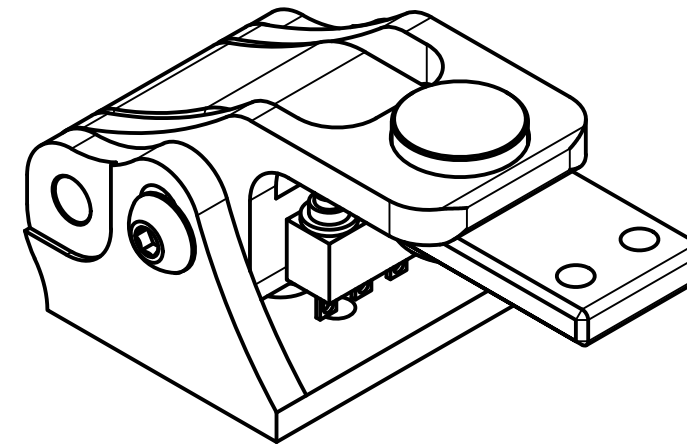
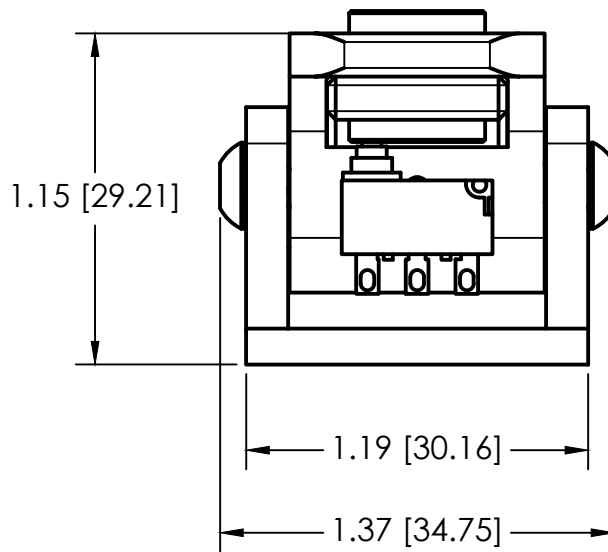
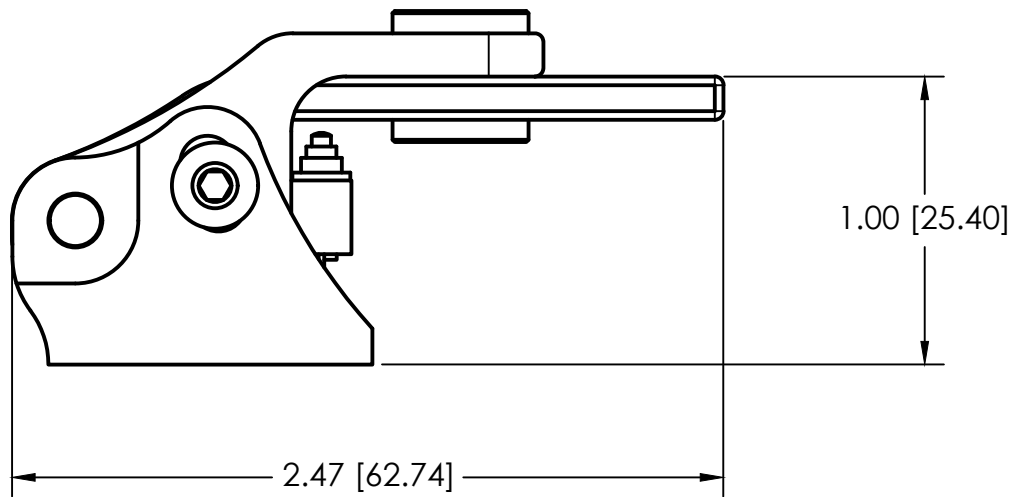
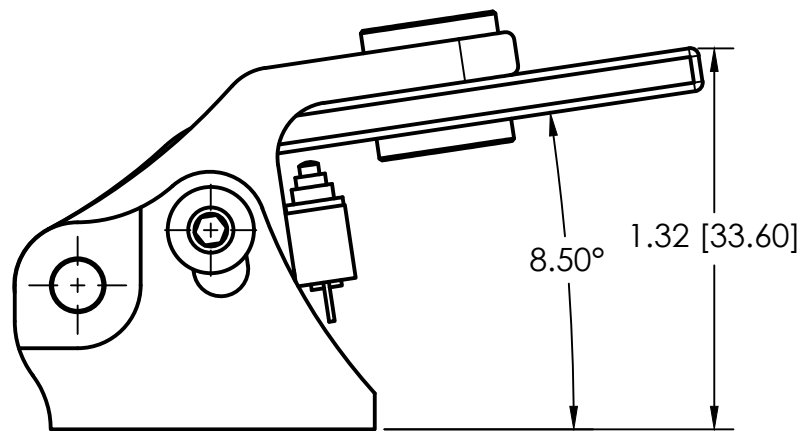


- NOTES:
1. DIMENSIONS ARE FOR REFERENCE ONLY
  2. DIMENSIONS GIVEN WITH ARM IN CENTER OF TRAVEL  
UNLESS OTHERWISE NOTED
  3. TIGHTEN PIVOT LOCK SCREWS TO 25 IN-LB (3.2 N-m) MAX



MAX 6° PIVOT DOWN




MAX 8° PIVOT UP

ADJUSTMENT HEIGHTS ARE APPROXIMATE

UNLESS OTHERWISE SPECIFIED	
DECIMALS	ANGULAR
.XXX ± .005	± .5° (MACH)
.XX ± .02	± 2° (BEND)
.X ± .06	
SURFACE ROUGHNESS: Ra 125 MAX	
BREAK EDGES .002/.020 RADIUS OR CHAMFER	
INTERPRET PER ASME Y14.5-2009	

THIRD ANGLE PROJECTION	
FINISH: BLACK ANODIZE TYPE II	
MATERIAL:	
DRAWN BY: MP	DATE: 10/17/2020

 1636 MACOPIN RD WEST MILFORD, NJ 07480 973-757-0998 INFO@ADVANCED-RACING.COM		THIS DRAWING AND THE CONTENTS HERIN ARE CONFIDENTIAL AND THE SOLE PROPERTY OF ADVANCED RACING DEVELOPMENT REPRODUCTION OF THIS DRAWING OR CONSTRUCTION OF ANY PARTS WITHIN THIS DRAWING ARE FORBIDDEN WITHOUT PRIOR WRITTEN CONSENT	
		TITLE MAGNETIC PADDLE SHIFTER	
SIZE B	DWG NO MPS	REV	
SCALE 1:1	UNITS: INCHES	SHEET 1/1	